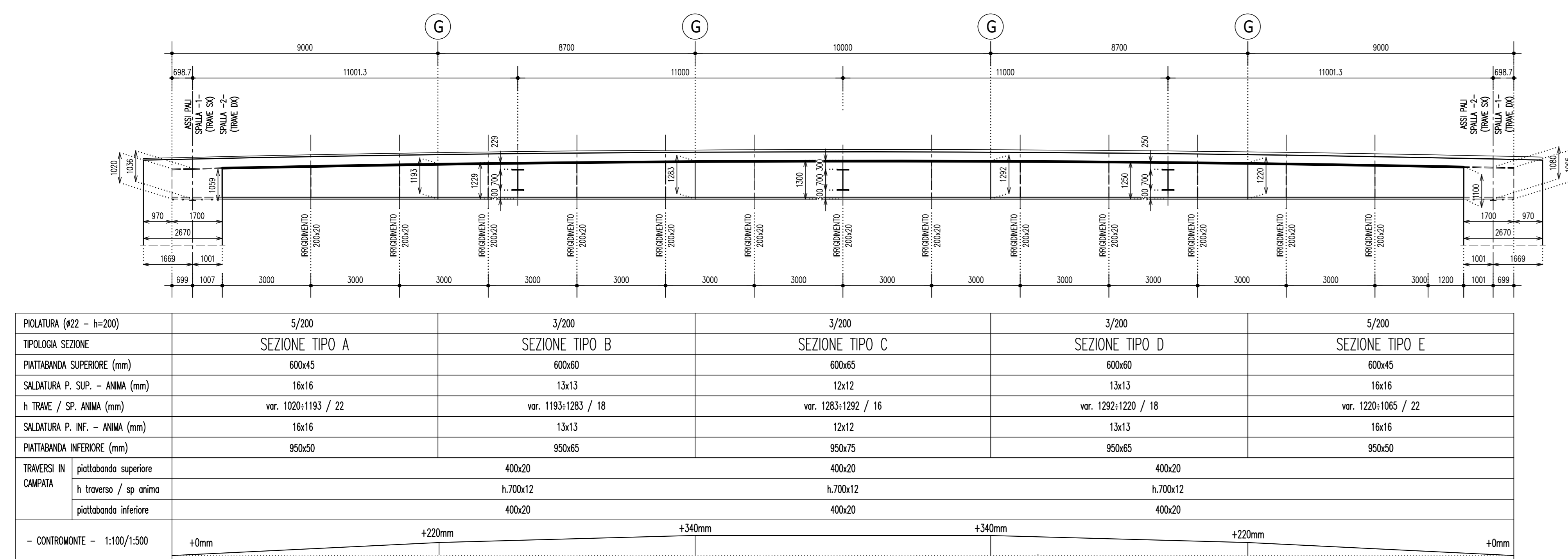
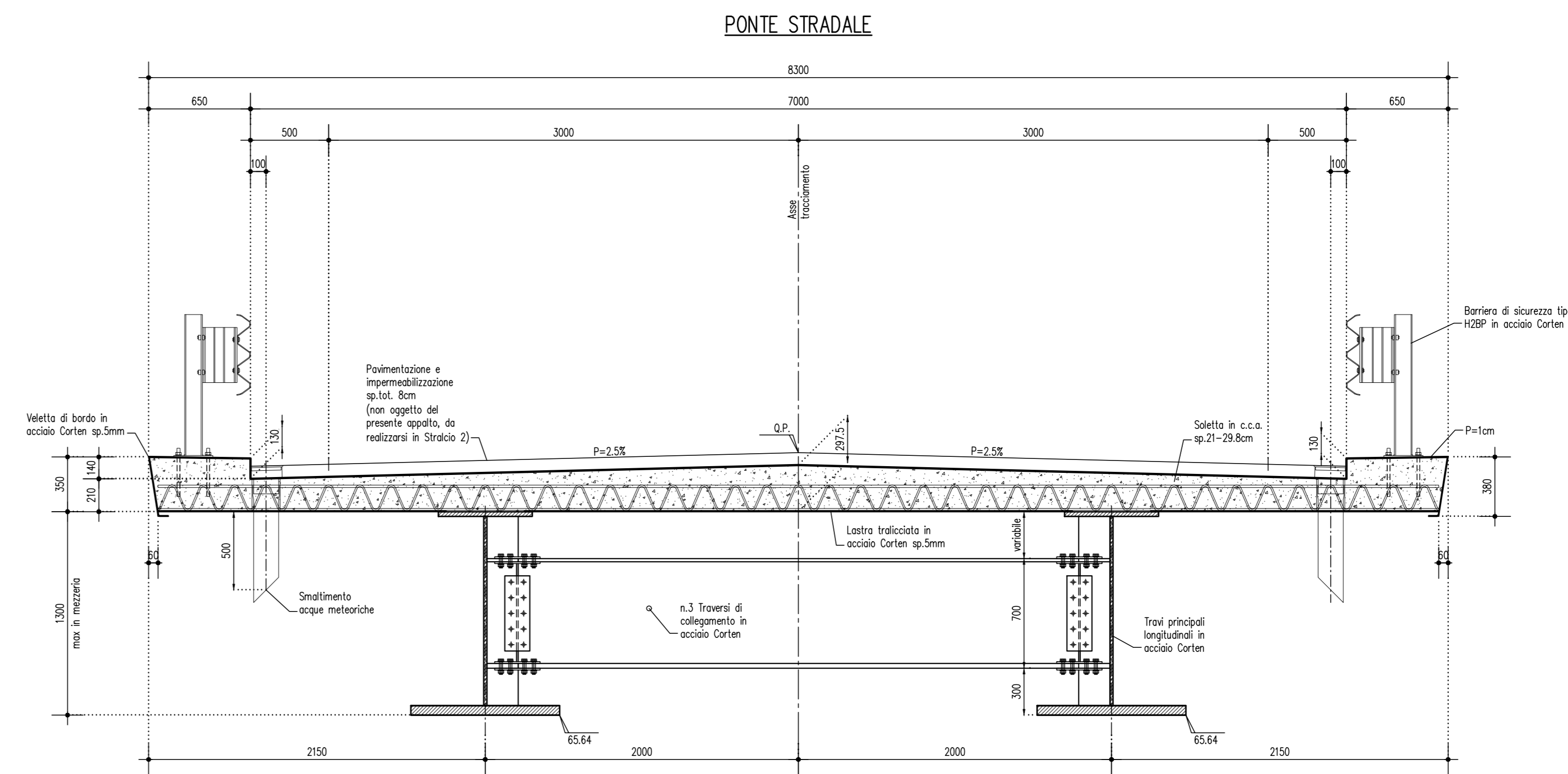


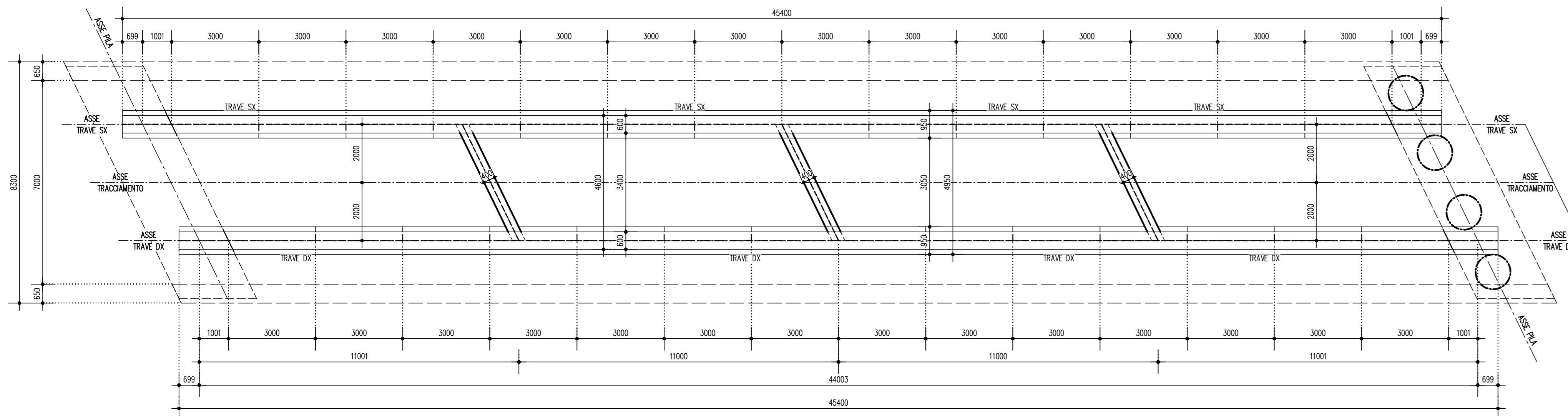
SEZIONE LONGITUDINALE STRUTTURA METALLICA IN ASSE TRAVE SX e DX 1:100



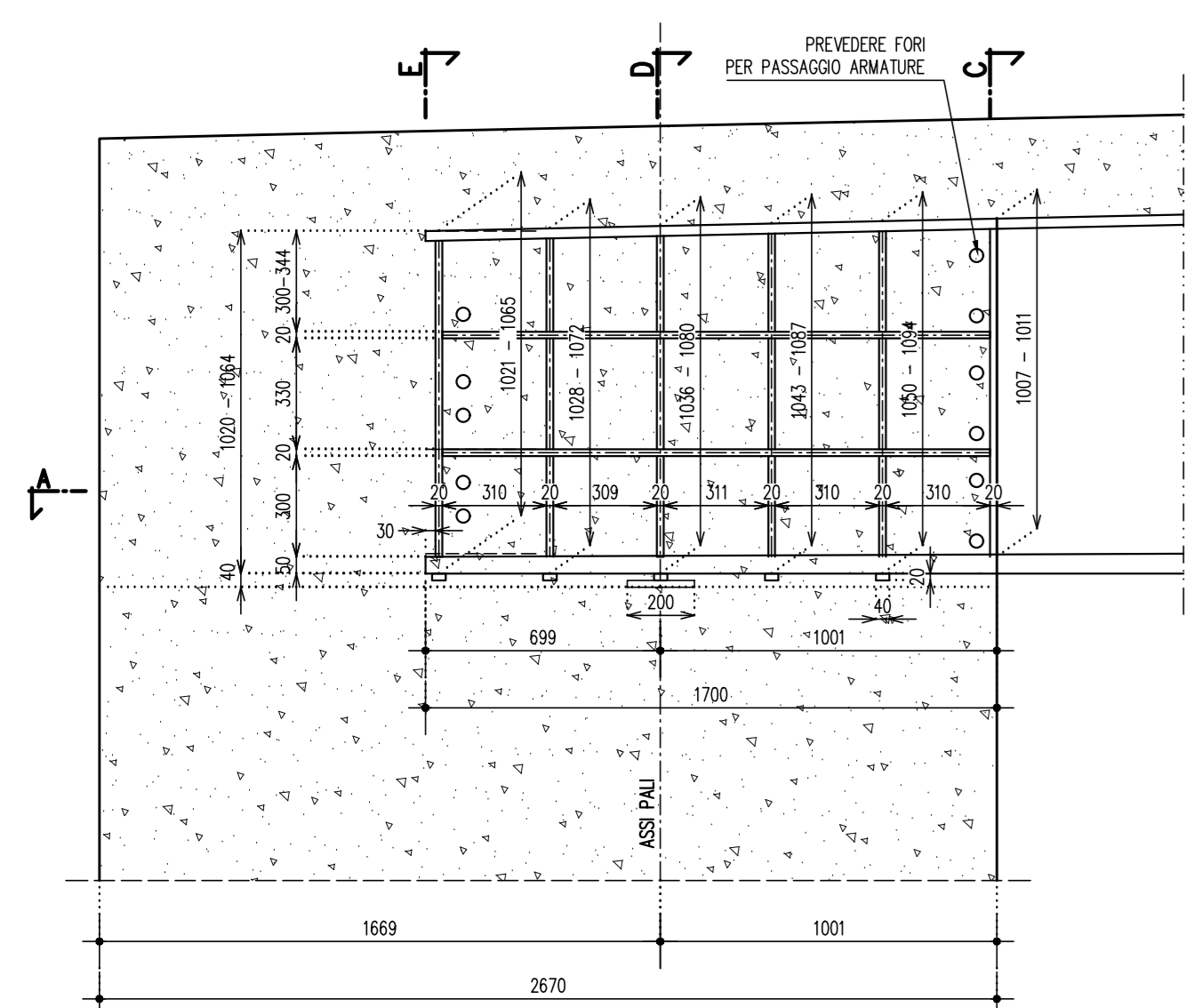
SEZIONE TRASVERSALE TIPO IMPALCATI 1:25



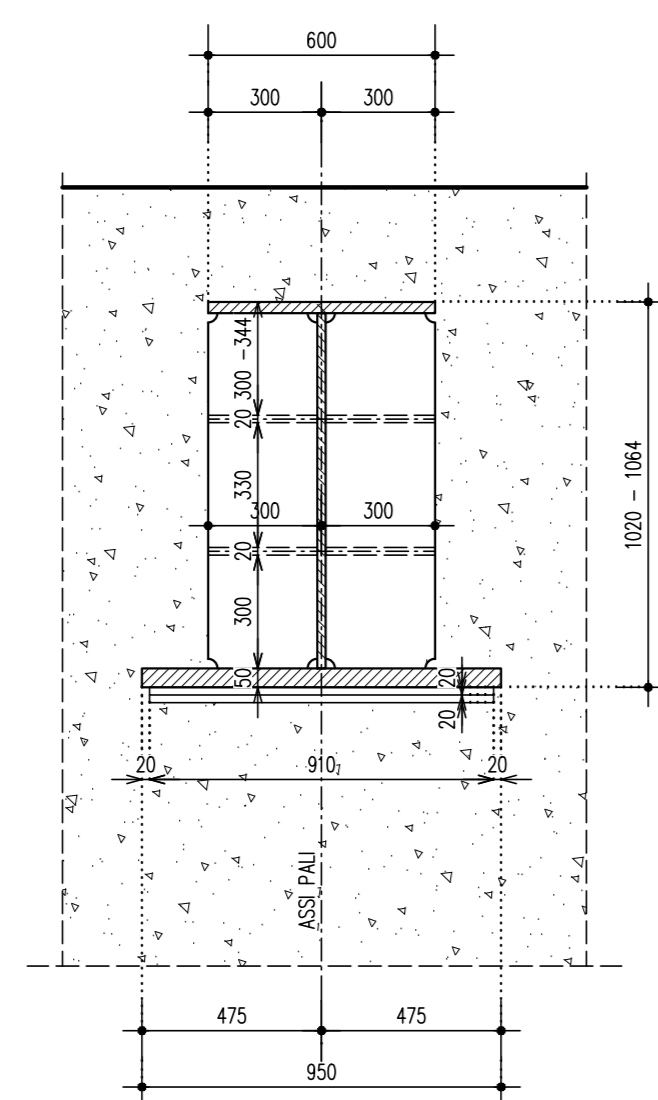
PIANTA TRAVI STRUTTURA METALLICA 1:100



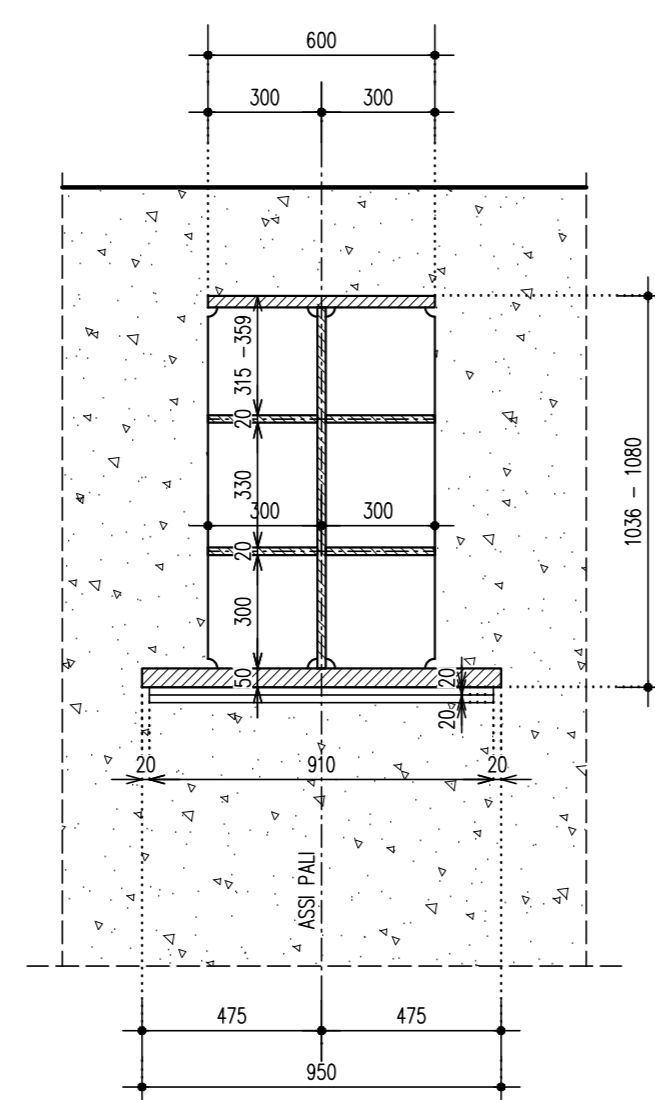
PARTICOLARE NODO TRAVE/SPALLA 1:20
VISTA LONGITUDINALE IN ASSE TRAVE (H.Var.)



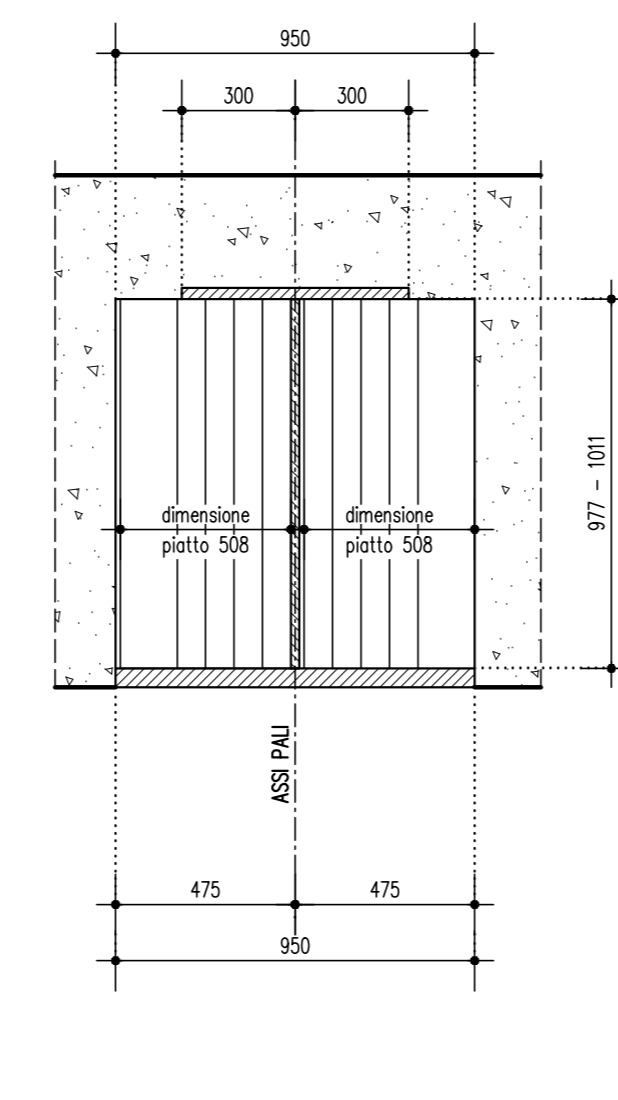
SEZIONE E-E



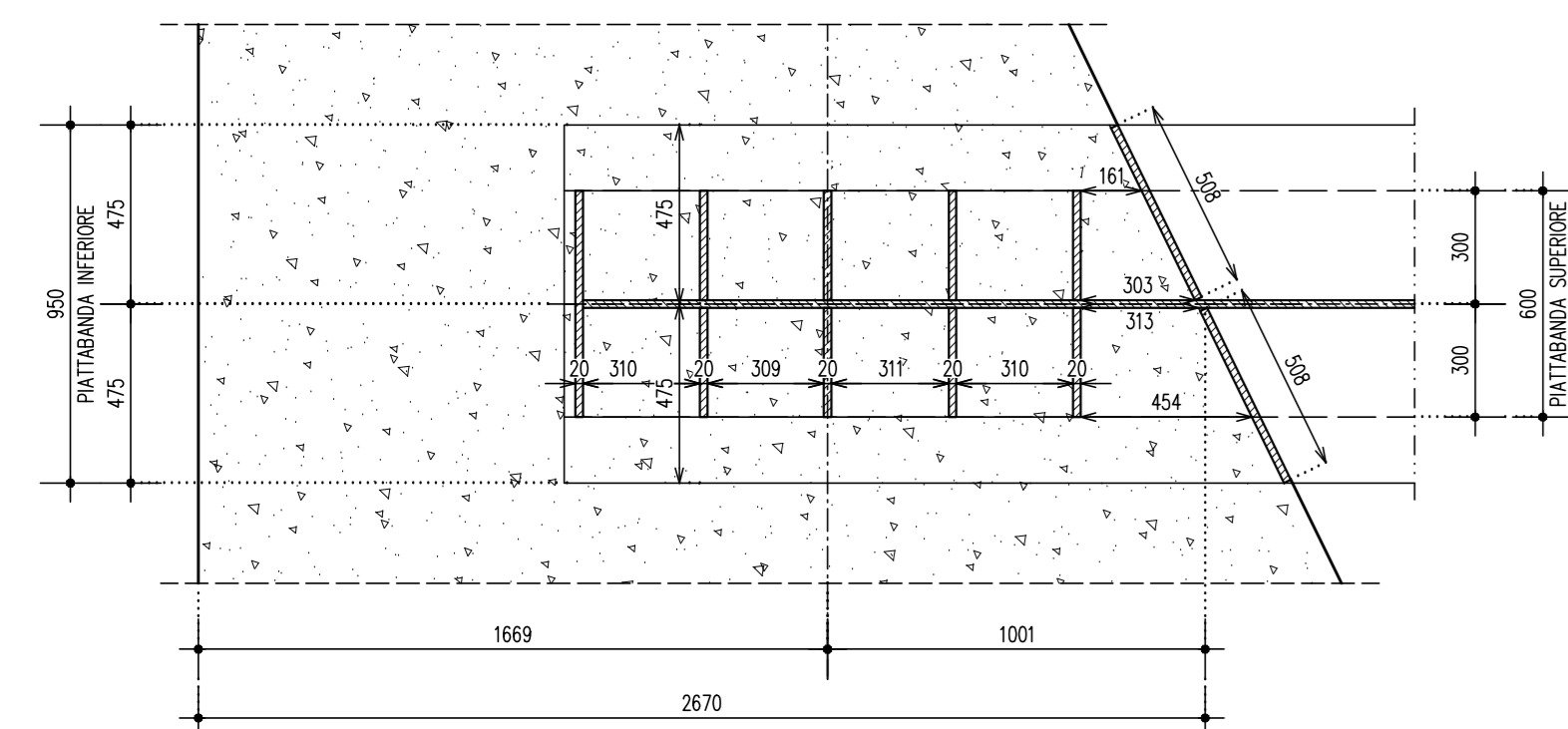
SEZIONE D-D



SEZIONE C-C



PIANTA A-A



PROGETTO ESECUTIVO
STRALCIO 1

PROGETTO:
**INTERVENTO DI RIFACIMENTO
PONTE E COLLEGAMENTO
ALLE ARGINATURE ESISTENTI A
QUOTA ADEGUATA DEL NODO
LOC. SAN DONNINO**



Ing. Luca Piacentini
INGEGNERI
Via S. Maria 10, 41012 Casalgrande (RE)

PROGETTO STRUTTURALE
CARPENTERIA METALLICA IMPALCATO
PONTE STRADALE
DISEGNO D'ASSIEME

REV.	DATA	ESSEZIONE	STATO	OPERAZIONE	PRODOTTORE
1	15/09/2021	ESSEZIONE	STR	STR-012	A